

# STOCKPILES MEASUREMENT SYSTEM

Automatic 3D volume computation for industrial applications



**AUTOMATIC  
VOLUME**



**CUSTOM  
SOLUTION**



**NO WORK  
INTERRUPTION**



**PLUG&PLAY  
ACTIVATION**

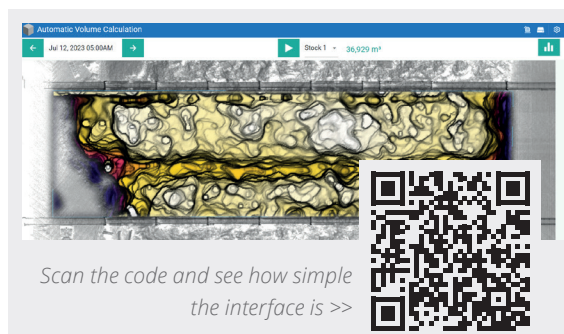
An all-in-one system for the **near-real-time, automatic calculation of stockpile volume and volume changes.**

Easy-to-manage **web-based** application permits 3D scans to be obtained without any interference with normal plant operations.

With a team of engineers studying the customer's requirements to determine the optimal on-site design, this solution is highly customisable.

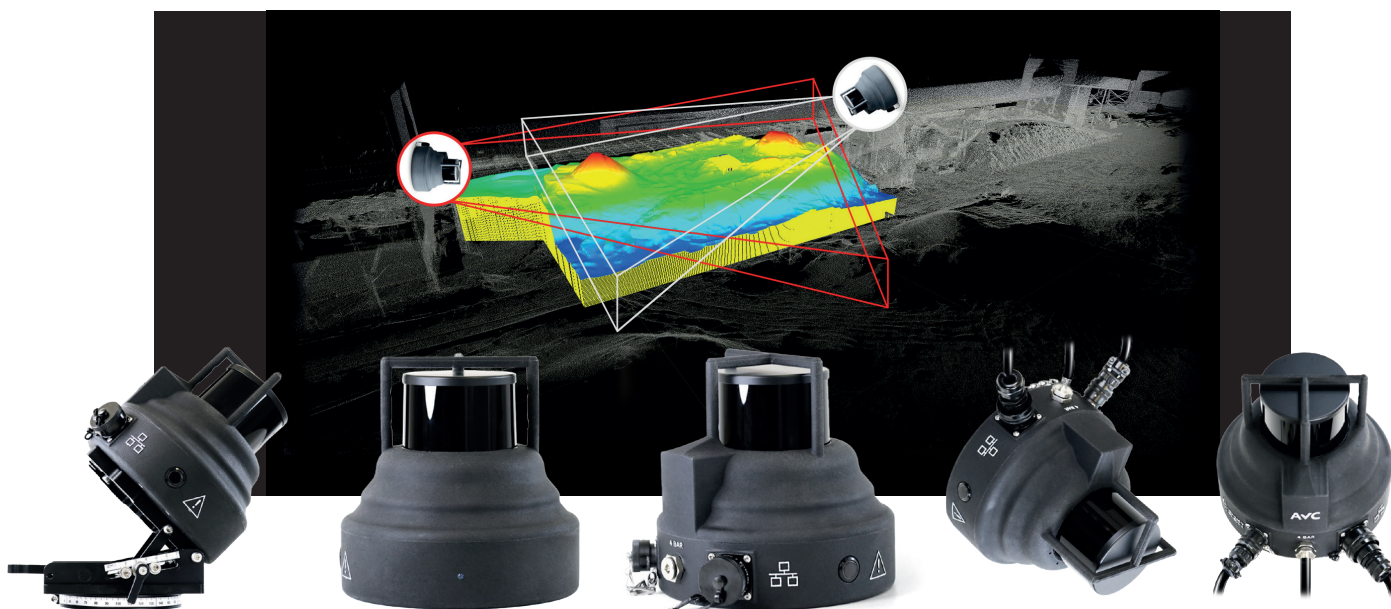
Installation is really straightforward. Three cables - power, Internet, and pressurised air - reach each sensor, and a PC or tablet with an incredibly **user-friendly interface** controls them all.

Designed to operate even at **low temperatures**, it can be installed in **harsh indoor environments.**



*Scan the code and see how simple  
the interface is >>*

- Measurement in less than 5 seconds per head
- Customised number and position of heads
- 3D accuracy within 3 cm
- Operating temperature -40°C to +60°C
- Power supply/consumption of 12W per head
- Ethernet connectivity
- Automatic head self-cleaning



Gexcel Srl  
Via Branze 45, I-25123 Brescia (Italy)  
sales@gexcel.it | +39 030 6595001

© Gexcel Srl. All rights reserved. This document is intended for informational and instructional purposes only. Gexcel maintains the right to make changes to the specifications and other information in this document at any time without prior notice.

Official distributor contact: